



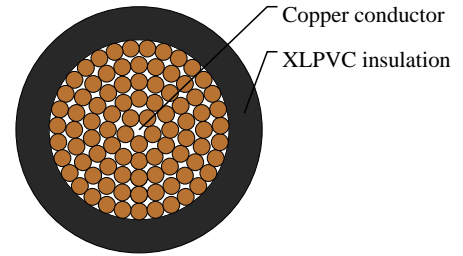
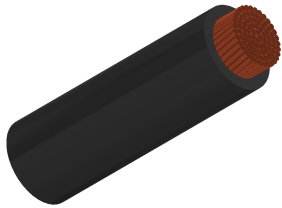
Caledonian

Automotive Cables

www.caledonian-cables.com

marketing@caledonian-cables.com

AEXHSF 1C25



APPLICATIONS

This XLPE insulated single-core cable is used in EPS(Electric power steering), Starter motor for automobiles.

STANDARDS

HKMC ES 91110-05

CABLE CONSTRUCTION

Conductor: Tin coated annealed copper

Insulation: Cross-linked Polyethylene (XLPE)

Standard Compliance: HKMC ES 91110-05

PHYSICAL AND THERMAL PROPERTIES

Operating temperature: -45°C to +150 °C

DIMENSION AND PARAMETERS

| No. of Cores × Cross-sectional Area | No. and Dia. of Wires | Diameter of Conductor (max.) | Nominal Insulation Thickness | Overall Diameter (min.) | Overall Diameter (max.) | Approx. Weight | Electrical Resistance at 20°C (max.) |
|---|--------------------------|------------------------------------|------------------------------------|-------------------------------|-------------------------------|-------------------|---|
| No.×mm ² | no./mm | mm | mm | mm | mm | kg/km | MΩ/m |
| 1x25 | 1007/0.18 | 7.1 | 1.3 | 9.7 | 10 | 280 | 0.76 |